

# ELECTRIC BUS TRACTION MOTOR

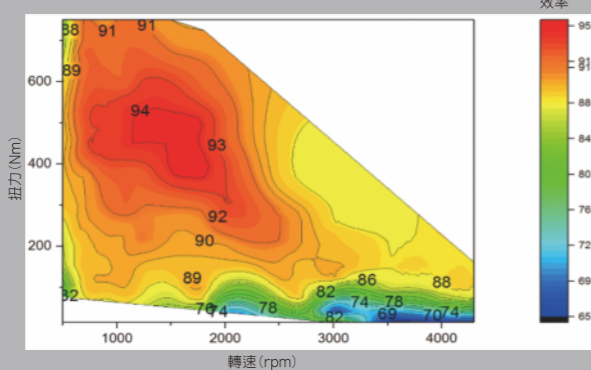
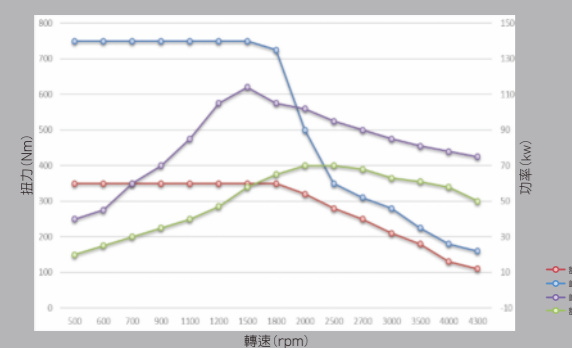
專業電動車驅動系統製造廠



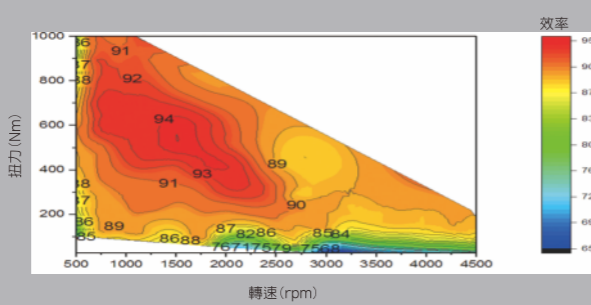
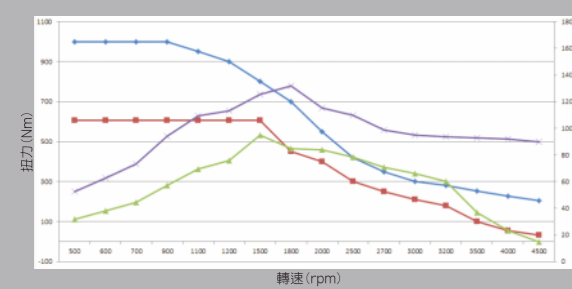
T-N曲線 | T-N Curve

效率圖 | Efficiency Map

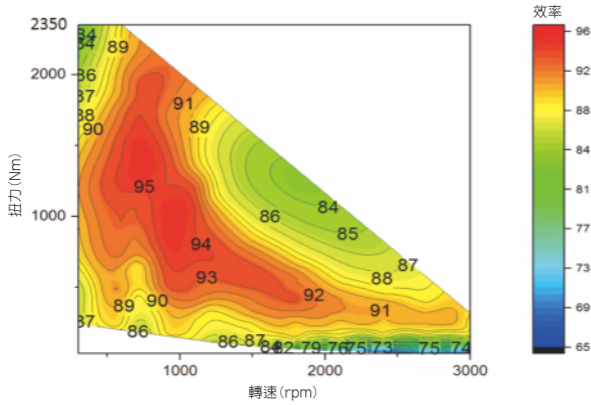
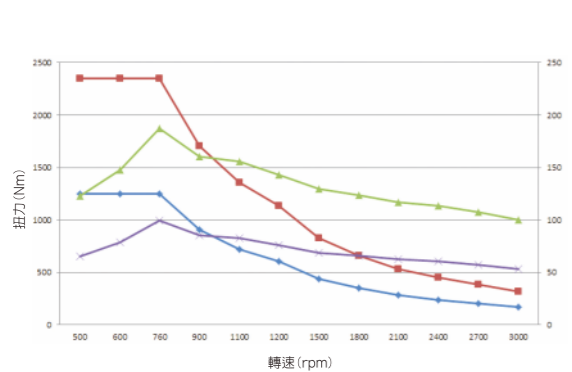
EVPM-124-43



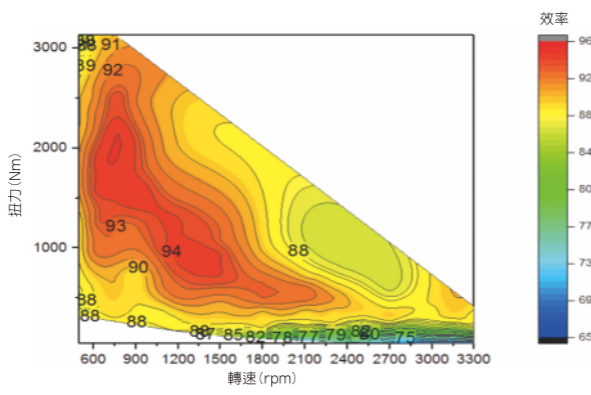
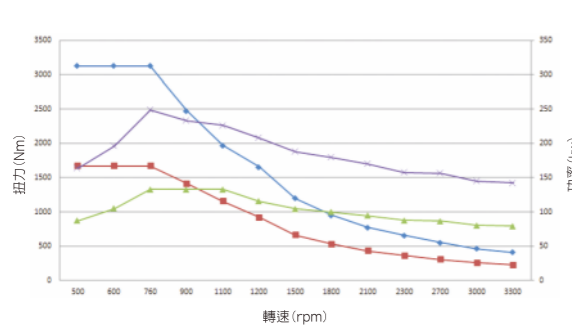
EVPM-132-30



EVPM-200-30



EVPM-250-30



晟昌機電股份有限公司  
SOLPOWER MACHINE ELECTRONIC CORP.

No.89, Ln.1005, Sec 1, Hemu Rd., Qingshui Dist.,  
Taichung City 43641,Taiwan(R.O.C)  
43641 台中清水區和睦路一段 1005 巷 89 號  
TEL: +886-4-2620-2888  
FAX: +886-4-2620-2777

www.solpowermotor.com  
E-mail: sol.power@solpower.com.tw



# 電動巴士驅動電機

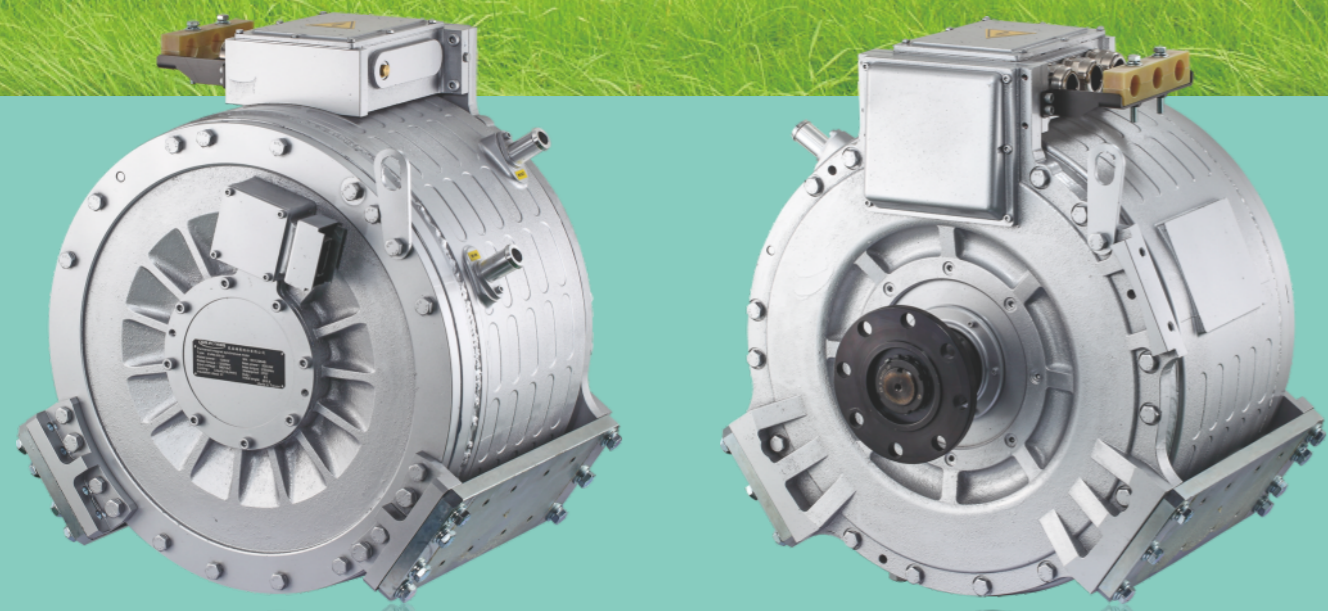
## 特性

Electric Bus Traction Motor  
Feature

- 設計介面採用直驅式不需減速箱。電池消耗電量低於感應電機於7%。
- 與減速箱驅動系統比對下，整體行駛效率可增加10%。
- 具有強健結構、高效率、高扭力、高功率密度與低保養次數。
- 散熱系統為15LPM水冷方式，可在60°C水溫下正常運行。
- 電機啟動電流較小，可用於頻繁啟動的市區電動公車。
- 有寬廣的恒轉矩區和恒功率區，具有2倍超載能力滿足電動公車快速啟動、高加速性、高負荷爬坡等需求。
- 無減速機構可降低行駛NVH與空間設計更有彈性，配合車廠設計。
- 防水等級符合IP65規格設計。 ● 具有良好耐候性的性質。
- 可應用於電動巴士車型。 ● 可客製化設計與驗證。



- Designed to interface with vehicle standard rear differentials without an intermediate gearbox.
- Compare gear driver better than driving efficiency 10%.
- Have strong structure, high torque, high power density and low maintenance.
- Cooling system used 15LPM liquid cooling and normal running with 60°C inlet water.
- Low start current use frequent start city Electronic Bus.
- Have wide constant torque and constant power area, that double torque satisfies Electronic Bus fast start, high acceleration and high climbing angle required.
- None gear box can reduce NVH and design dimension with automobile factory requires.
- Ingress protection rating Ip65. ● Have well weatherproof.
- Application Electronic Bus. ● Customized design and verification.



# 電動巴士驅動電機

## 規格

Electric Bus Traction Motor  
Specification

| Item                                      | Specification | Parameter  |             |             |             |
|---|---------------|--|-------------|-------------|-------------|
| 產品型號 Model                                |               | EVPM-124-43  | EVPM-132-30 | EVPM-200-30 | EVPM-250-30 |
| 額定功率/峰值功率<br>Continuous/ Peak Power(kW)   |               | 73/124   | 95/132      | 100/200     | 133/250     |
| 額定扭力/峰值扭力<br>Continuous / Peak Torque(Nm) |               | 350/750  | 605/1000    | 1250/2350   | 1670/3130   |
| 額定轉速/最高轉速<br>Continuous / Max. speed(rpm) |               | 2000/4300  | 1500/4500   | 760/3000    | 760/3300    |
| 電機最高效率<br>Motor Efficiency                |               | 94%  | 94%         | 94%         | 94%         |
| 額定電壓<br>Voltage(VAC)/ (VDC)               |               | 380/540  |             |             |             |
| 電壓範圍<br>Voltage Range(VDC)                |               | 450-720  |             |             |             |
| 工作溫度範圍<br>Operation Temperature(°C)       |               | -40-120  |             |             |             |
| 絕緣等級<br>Isolation                         |               | H  |             |             |             |
| 防水等級<br>Ingress Protection Rating         |               | IP65   |             |             |             |
| 法規認證<br>Regulatory certification          |               | GB 18488/ISO 16750                                   |             |             |             |
| 電機重量<br>Motor weight(kg)                  |               | 141  | 159         | 300         | 379         |
| 冷卻方式<br>Cooling                           |               | 水冷 (50%純水+50%乙二醇)<br>Liquid (50% Water + 50%Glycol ) |             |             |             |
| 流量<br>Flow(l/min)                         |               | 15   |             |             |             |
| 最高入水口溫度<br>Max. Inlet Temperature(°C)     |               | 60   |             |             |             |
| 位置傳感器<br>Position Sensor                  |               | 旋轉變壓器 Resolver                                       |             |             |             |
| 適用車型<br>Vehicle                           |               | 6-7米   | 6-8米        | 8-10米       | 10-12米      |

**驅動電機產品編碼**

|                      |     |             |                                  |              |     |  |       |           |
|----------------------|-----|-------------|----------------------------------|--------------|-----|--|-------|-----------|
| EVPM                 | 002 | 030         | S01                              | NT           | 050 | 1  | ----- | 版本碼       |
| EVPM永磁同步電機           |     | EVIM異部電機    |                                  | 產品大類         |     | 電壓   050:50VAC   220:220VAC   380:380VAC     |       |           |
| (000-999)   kW最大輸出功率 |     |             | 溫度感測器   NT:NTC   PT:PTC   KT:KTY |              |     | 感測器   S01:Resolver   S02:Magnetic   PL-1024R |       |           |
| 030:3000rpm          |     | 080:8000rpm |                                  | 100:10000rpm |     | 150:15000rpm                                 |       | (rpm)最高轉速 |

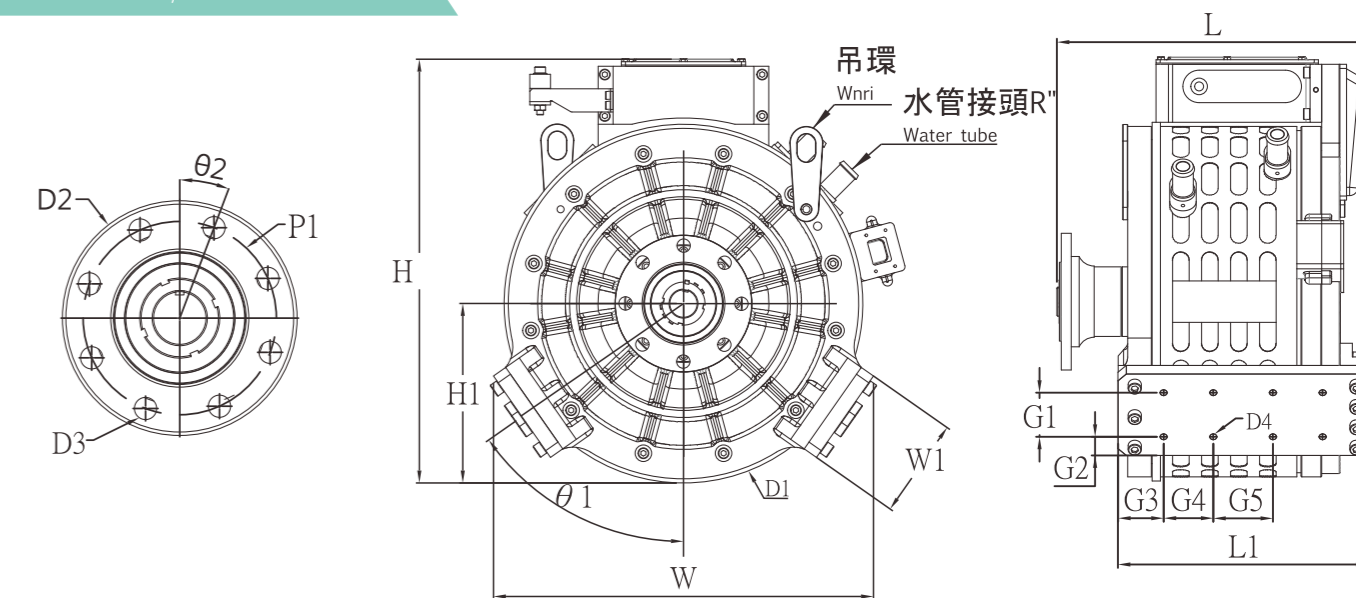
# 電動巴士驅動電機

## 尺寸

Electric Bus Traction Motor  
Dimension

| 產品型號 Model  | H   | H1  | W   | W1  | D1<br>Φ | D2<br>Φ | D3<br>Φ | D4  | L   | L1  | G1 | G2 | G3  | G4 | G5 | P1  | θ1 | θ2 |
|-------------|-----|-----|-----|-----|---------|---------|---------|-----|-----|-----|----|----|-----|----|----|-----|----|----|
| EVPM-124-43 | 512 | 217 | 459 | 120 | 433     | 165     | 16      | M10 | 377 | 302 | 65 | 23 | 55  | 60 | 74 | 140 | 55 | 23 |
| EVPM-132-30 | 512 | 217 | 459 | 120 | 433     | 165     | 16      | M10 | 377 | 302 | 65 | 23 | 55  | 60 | 74 | 140 | 55 | 23 |
| EVPM-200-30 | 587 | 256 | 561 | 150 | 512     | 165     | 16      | M10 | 464 | 367 | 90 | 30 | 87  | 60 | 76 | 140 | 55 | 23 |
| EVPM-250-30 | 592 | 256 | 561 | 150 | 512     | 165     | 16      | M10 | 534 | 434 | 90 | 30 | 120 | 60 | 74 | 140 | 55 | 23 |

EVPM-124-43 / EVPM-132-30



EVPM-200-30 / EVPM-250-30

